

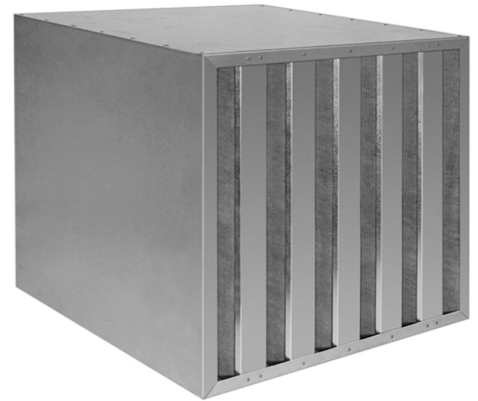
TripleAir Hi carb

Applications

Suitable for most gas-phase filtration applications including catering, museums, archives, airports, ozone reduction, VOC removal, mortuary, medical, pharmaceuticals, micro-electronics, sewerage plants and general odour removal.

Construction

The integral activated bonded carbon panels are manufactured in high grade carbon granules using a unique bonding technique that removes the necessity for post carbon filters. Each internal panel is housed in its own surrounding frame and then bonded into the main outer case in a multiple V formation.



Reference	Dimensions HxWxD (mm)	No. Of Carbon Panels	Filter Weight (kg)	Rated Capacity (m ³ /hr) @ 0.1 secs dwell time	Resistance @ 0.1 secs dwell time (Pa)
Hi carb 24x24x12	594x594x298	12	42	1,900	98
Hi carb 24x24x18	594x594x451	12	65	2,890	130
Hi carb 24x24x24	594x594x597	12	85	3,825	195
Hi carb 24x12x24	594x297x597	6	48	1,900	195
Hi carb 18x18x24	451x451x597	9	42	1,955	180
Hi carb 12x12x12	298 x 298 x 298	6	10	476	98

Clean Room Filtration and Lighting Technology

TripleAir Technology are suppliers of high quality HEPA and ULPA filtration, ceiling grid systems and luminaires for the clean room industry. We offer fully integrated ceiling solutions for projects and cleanroom facilities.

T +44(0)1670 739394

E info@tripleairtechnology.co.uk

tripleairtechnology.co.uk

TripleAir Hi carb

Grades

The correct grade of carbon needs to be specified at the time of ordering to ensure the correct contaminants are absorbed. The table below gives the grade of carbon and the corresponding contaminant.

Application	Recommended Dwell Time (Seconds)	Grade	Reference
Cooking - Spicy/Indian	0.2 < 0.4	General Purpose Activated Carbon	-7C
Reduction of Kerosene exhaust fumes	0.1 < 0.2	General Purpose Activated Carbon	-7C
Reduction of Ozone	0.1 < 0.2	General Purpose Activated Carbon	-7C
Reduction of Diesel fumes	0.2	5% Copper Treated Carbon	-9M
Reduction of H ₂ S, SO ₂ , NO ₂ , HCl	0.2	5% Copper Treated Carbon	-9M
Museum/Archives protection	0.2	5% Copper Treated Carbon	-9M
Mortuary/Formaldehyde Reduction	0.4	Mortuary Grade	-MO
Ammonia Neutralisation	0.3	Ammonia Grade	-AM

Housings

The filter cells can be arranged in banks to suit the airflow requirements of the system. Suitable housings are shown below.

